

D-7-A

**ST. LOUIS COUNTY JUVENILE CENTER FACILITY**  
CLAYTON MISSOURI  
DEPARTMENT OF PUBLIC WORKS  
DIRECTOR DAVID E. MURRAY

ARCHITECTS & ENGINEERS  
PEARCE & PEARCE, INC.  
CONSULTING ENGINEER  
CASSIS ASSOCIATES, INC.  
ELECTRICAL ENGINEER  
ROBERT F. BRUNS  
MECHANICAL ENGINEER  
CRANFORD & WITTE, INC.

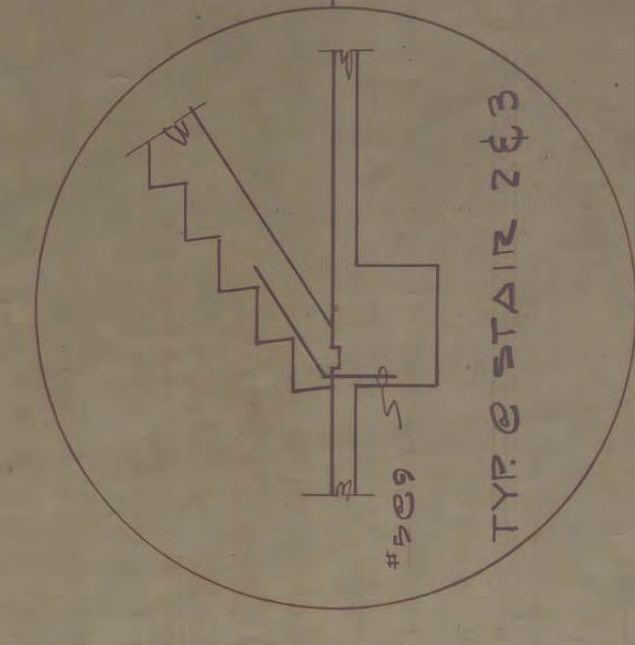
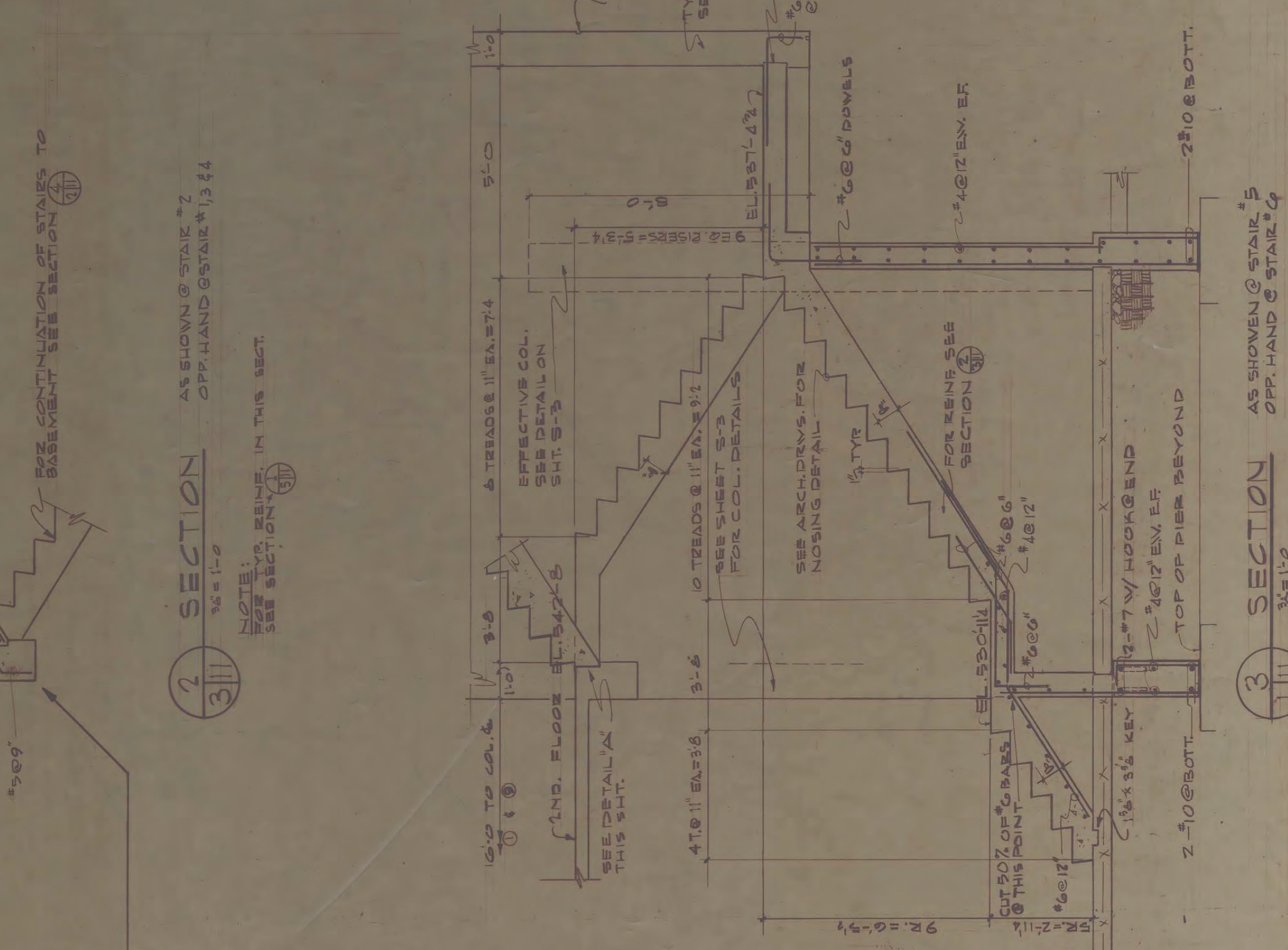
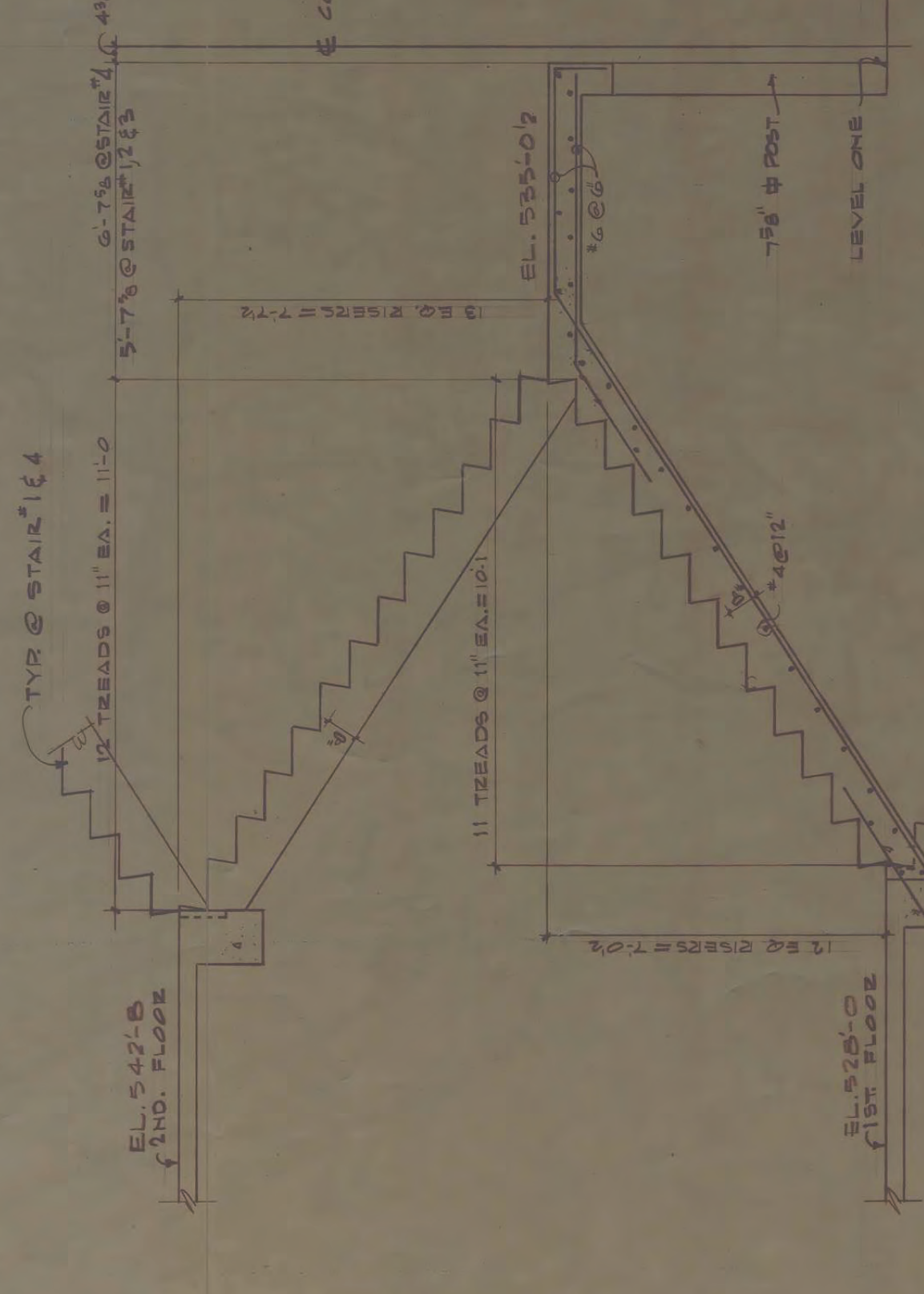
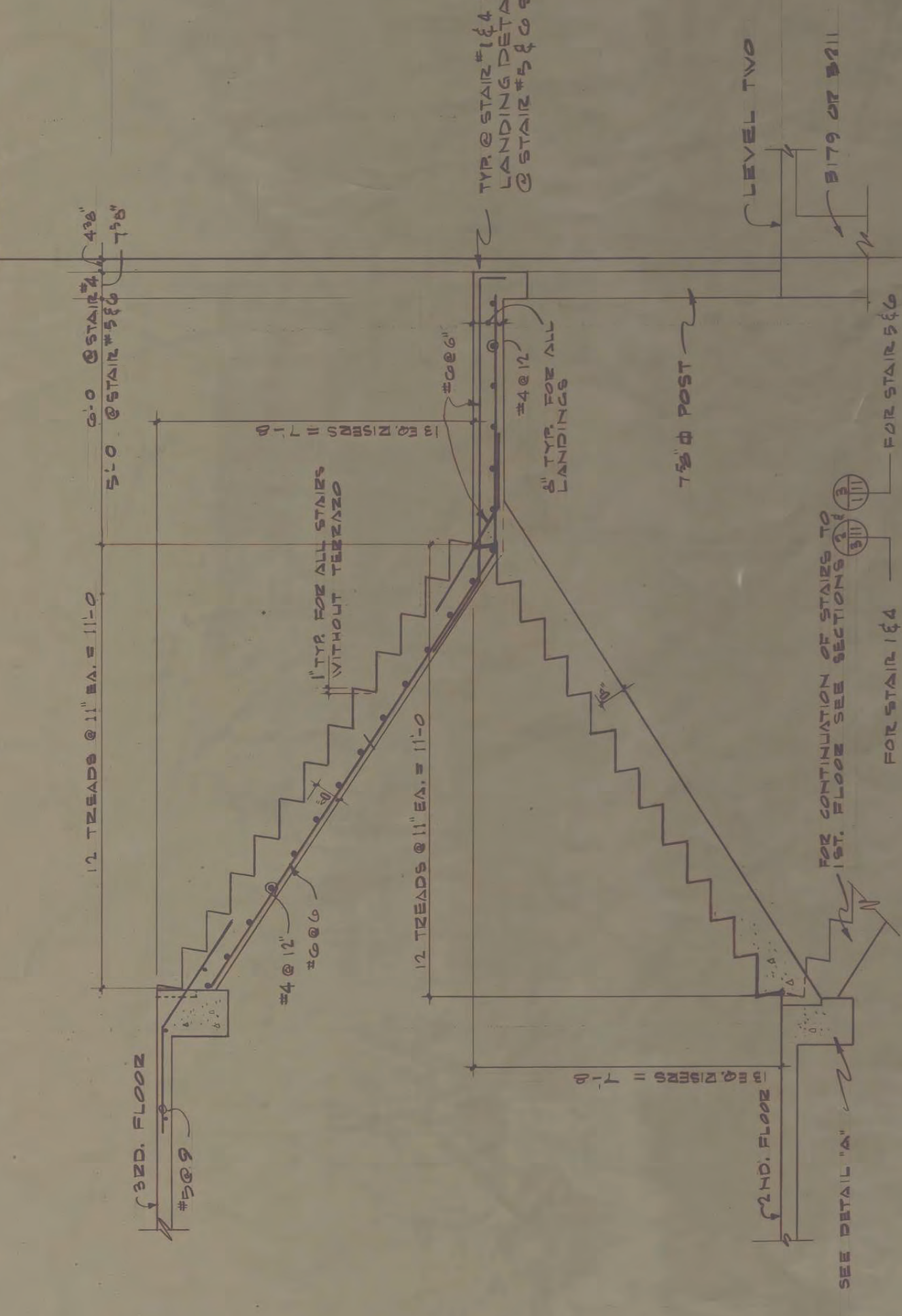
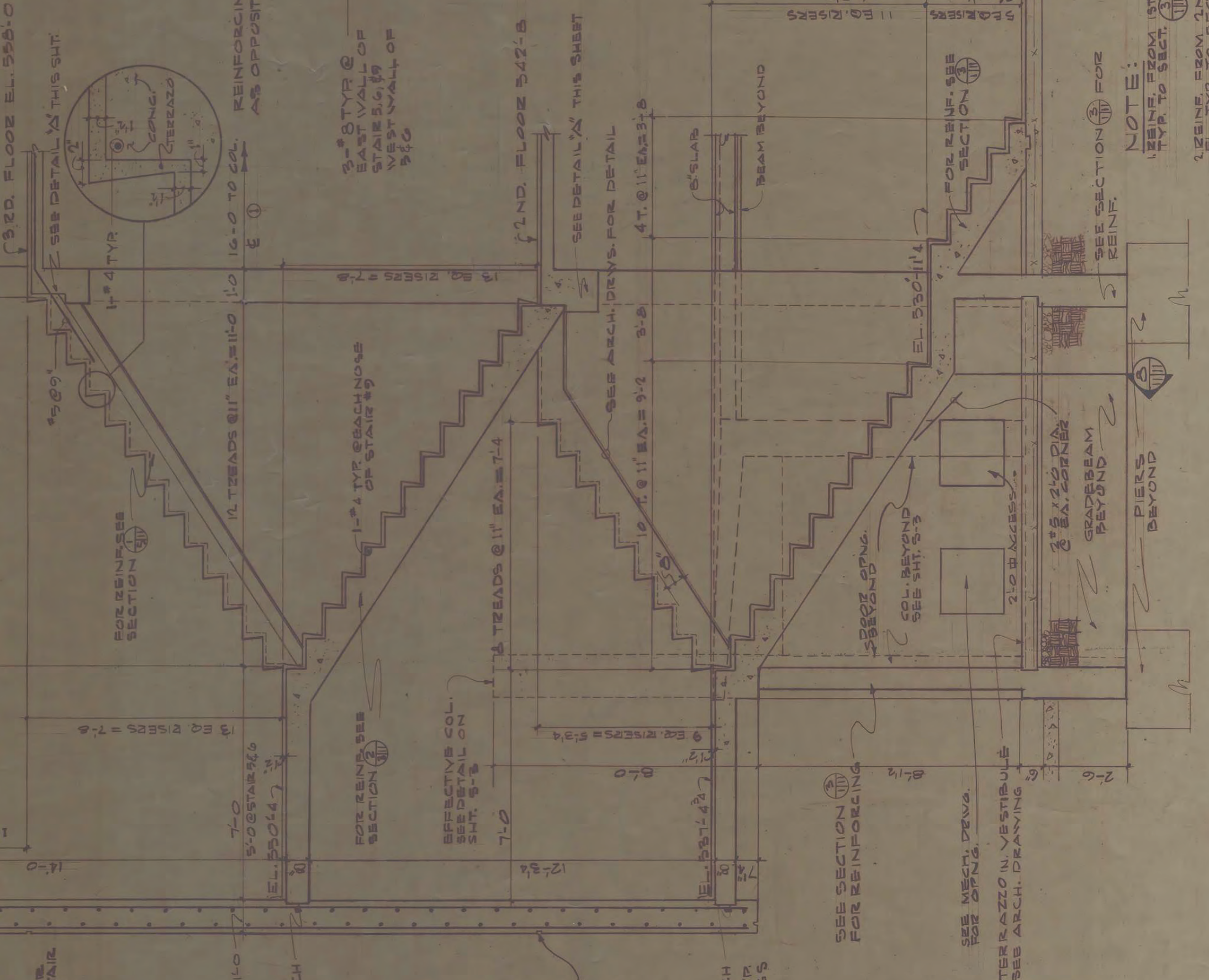
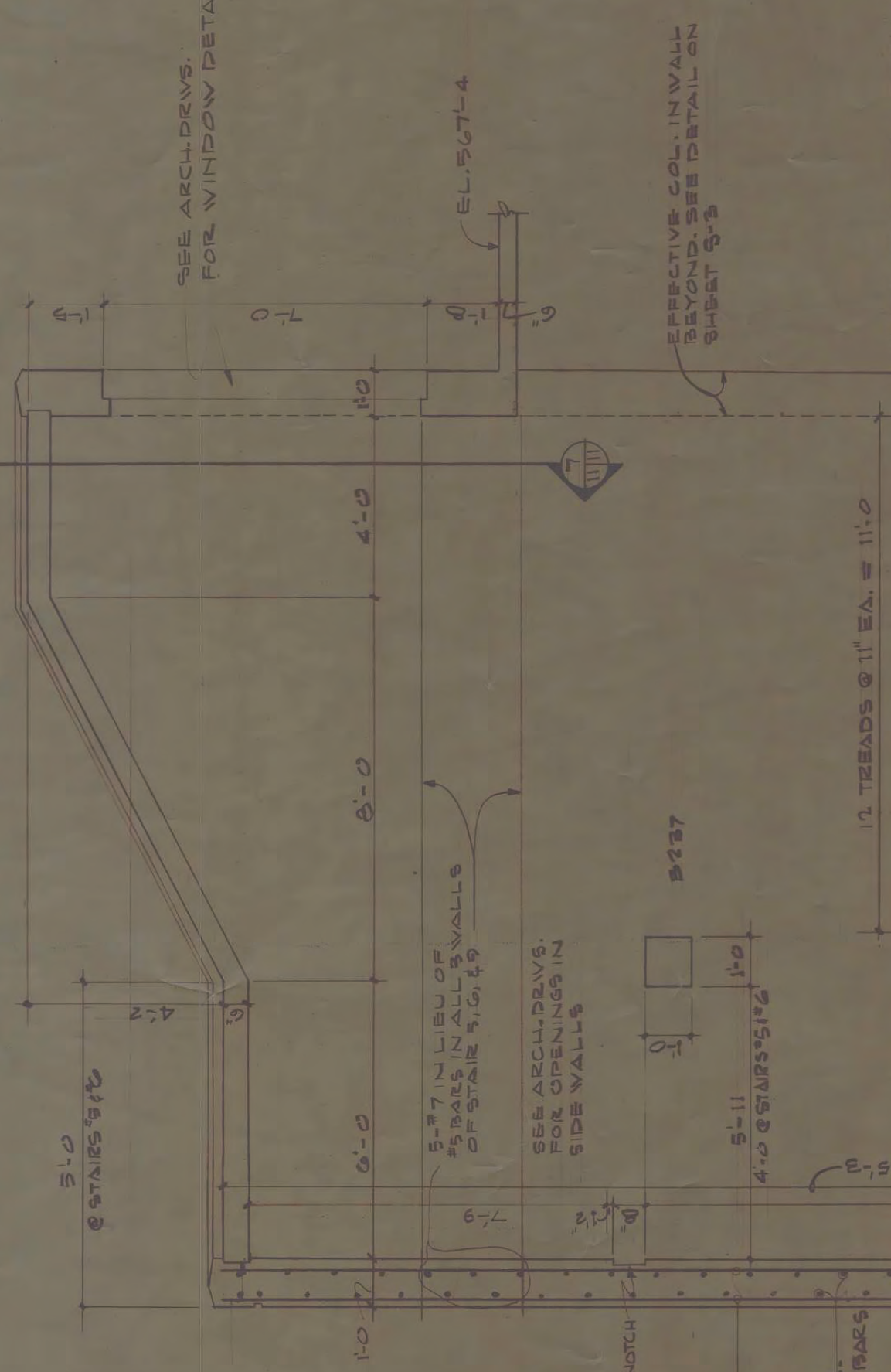
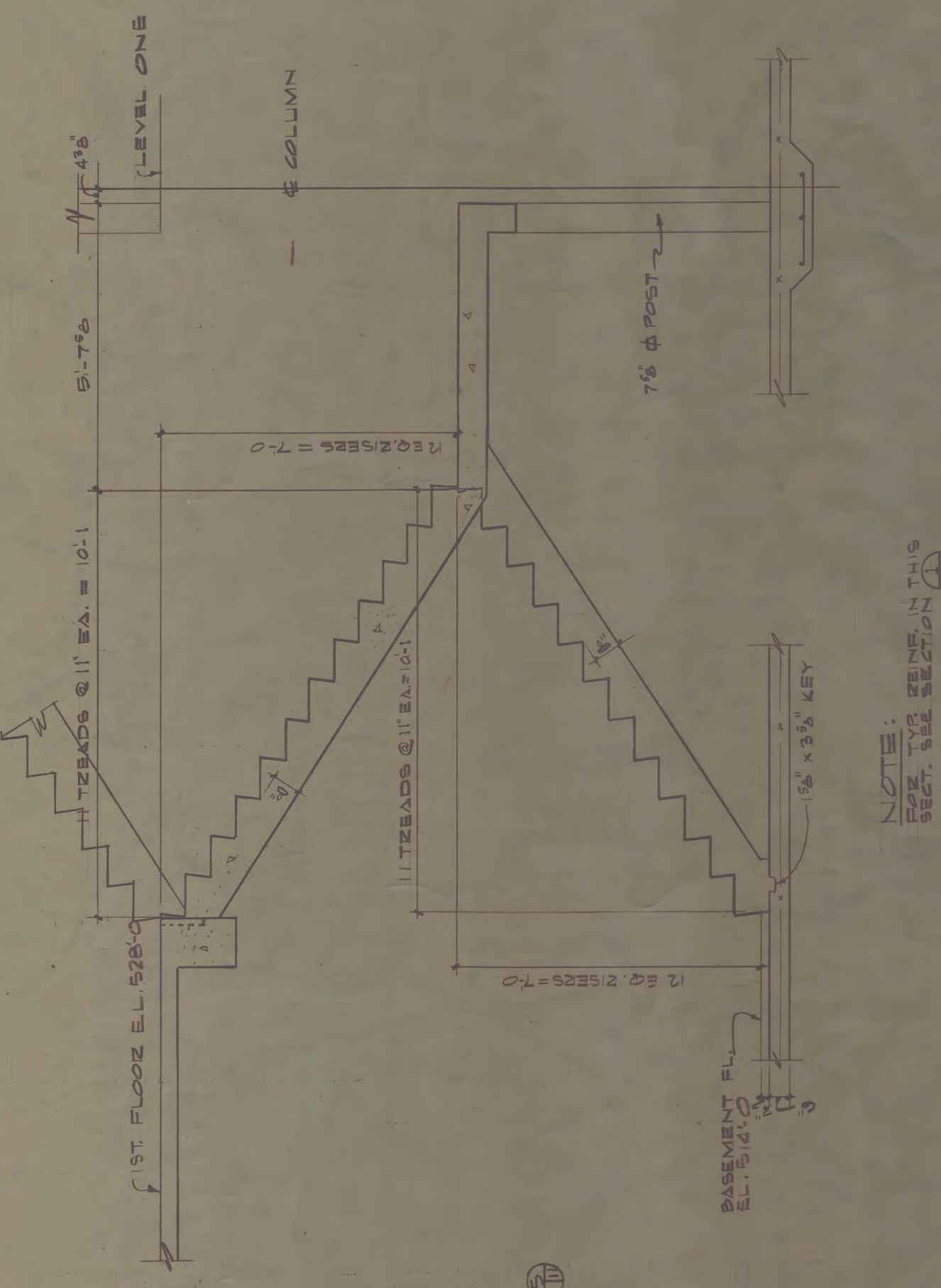
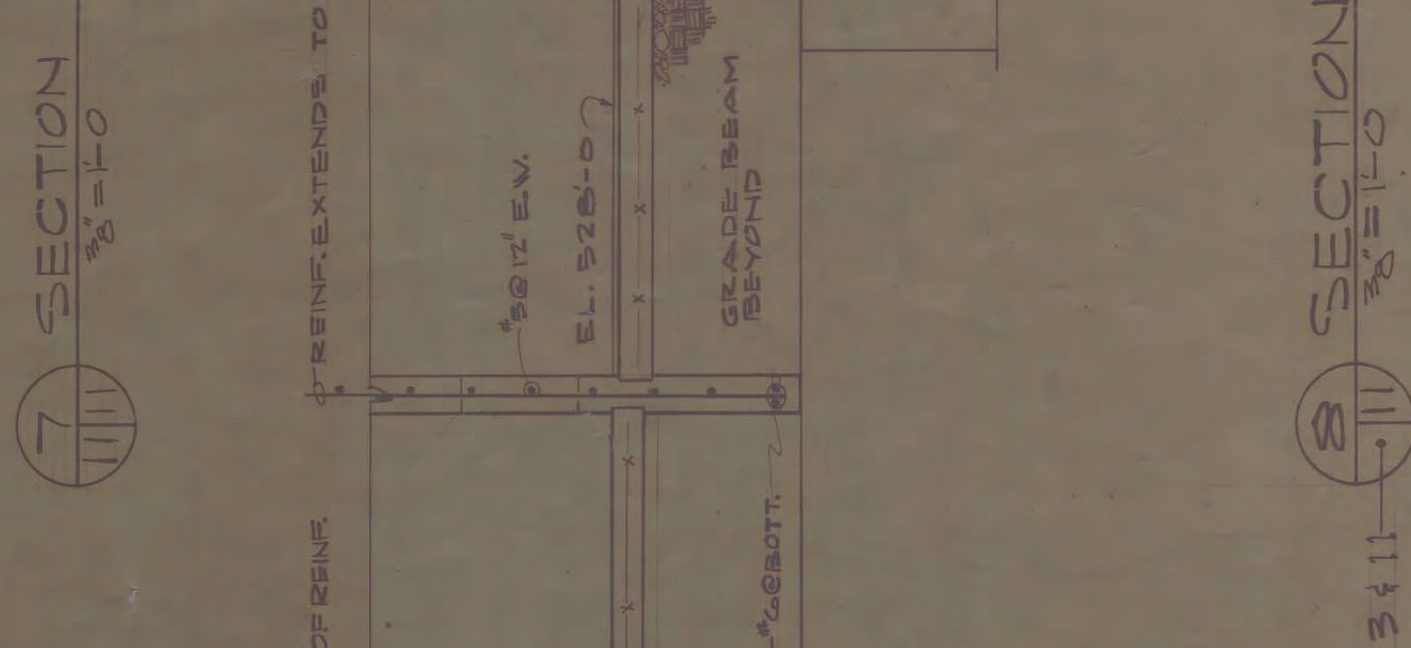
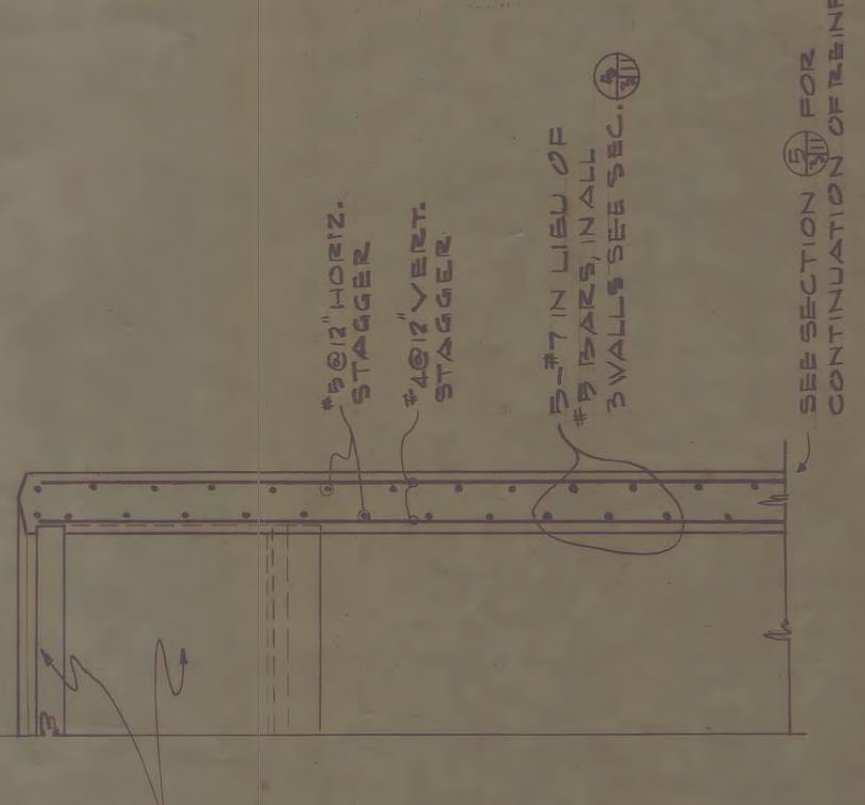
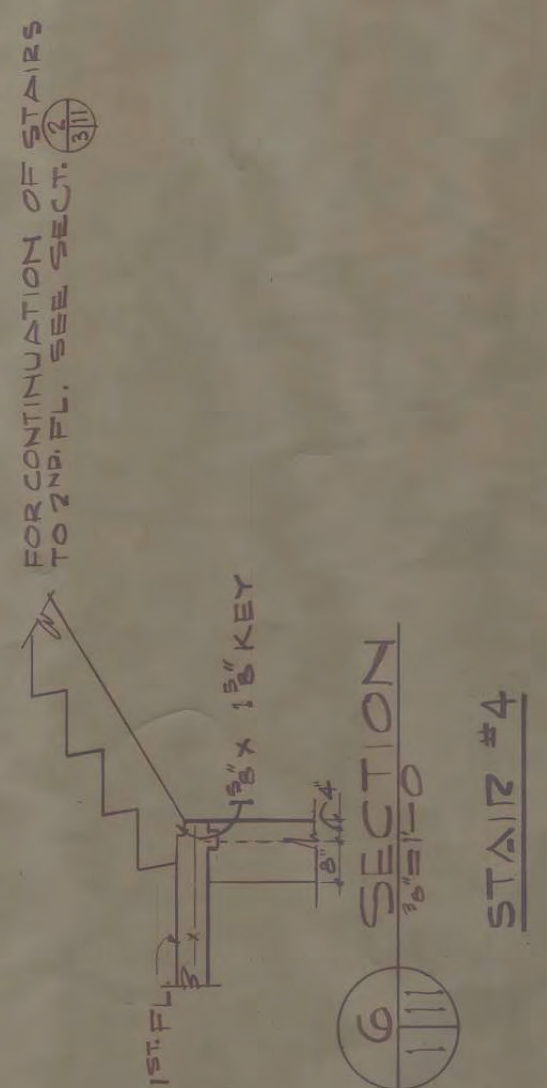
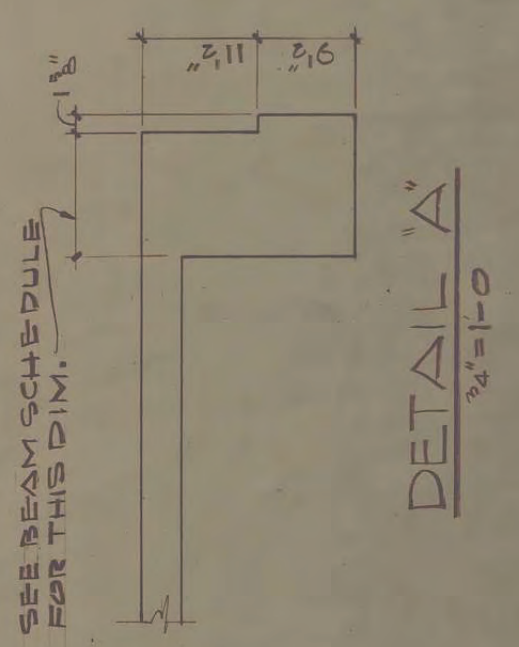
**S10**  
PROJ. NO. 02412  
DATE: 11/12/02  
REVISIONS  
CHECKED BY: PJP  
DESIGNED BY: PJP

**ALTERNATE BID 'A' FRAMING** (REVISION)

LEVEL THREE ROOF FRAMING PLAN LEVEL THREE FRAMING PLAN



ALTERNATE BID 'A' FRAMING PLAN  
1/8"=1'-0"



3, 5, 10, 17, 18, 9

NOTE: SEE SECTION 11

NOTE: SEE SECTION 11

NOTE: SEE SECTION 11

SEE BEAM SCHEDULE FOR THIS DIM.

FOR CONTINUATION OF STAIRS TO DETAIL, SEE SECTION 11

SEE SECTION 11 FOR CONTINUATION OF REINFC.

REINFC. EXTENDS TO TOP OF WALL

SEE DETAIL A FOR CONTINUATION OF REINFC.

SEE DETAIL A FOR CONTINUATION OF REINFC.

SEE DETAIL A FOR CONTINUATION OF REINFC.

NOTE: SEE DETAIL A FOR CONTINUATION OF REINFC.

NOTE: SEE DETAIL A FOR CONTINUATION OF REINFC.

NOTE: SEE DETAIL A FOR CONTINUATION OF REINFC.

NOTE: SEE DETAIL A FOR CONTINUATION OF REINFC.

NOTE: SEE DETAIL A FOR CONTINUATION OF REINFC.

NOTE: SEE DETAIL A FOR CONTINUATION OF REINFC.

NOTE: SEE DETAIL A FOR CONTINUATION OF REINFC.

NOTE: SEE DETAIL A FOR CONTINUATION OF REINFC.

NOTE: SEE DETAIL A FOR CONTINUATION OF REINFC.

NOTE: SEE DETAIL A FOR CONTINUATION OF REINFC.

NOTE: SEE DETAIL A FOR CONTINUATION OF REINFC.

NOTE: SEE DETAIL A FOR CONTINUATION OF REINFC.

NOTE: SEE DETAIL A FOR CONTINUATION OF REINFC.

NOTE: SEE DETAIL A FOR CONTINUATION OF REINFC.

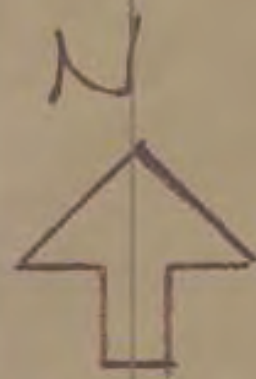
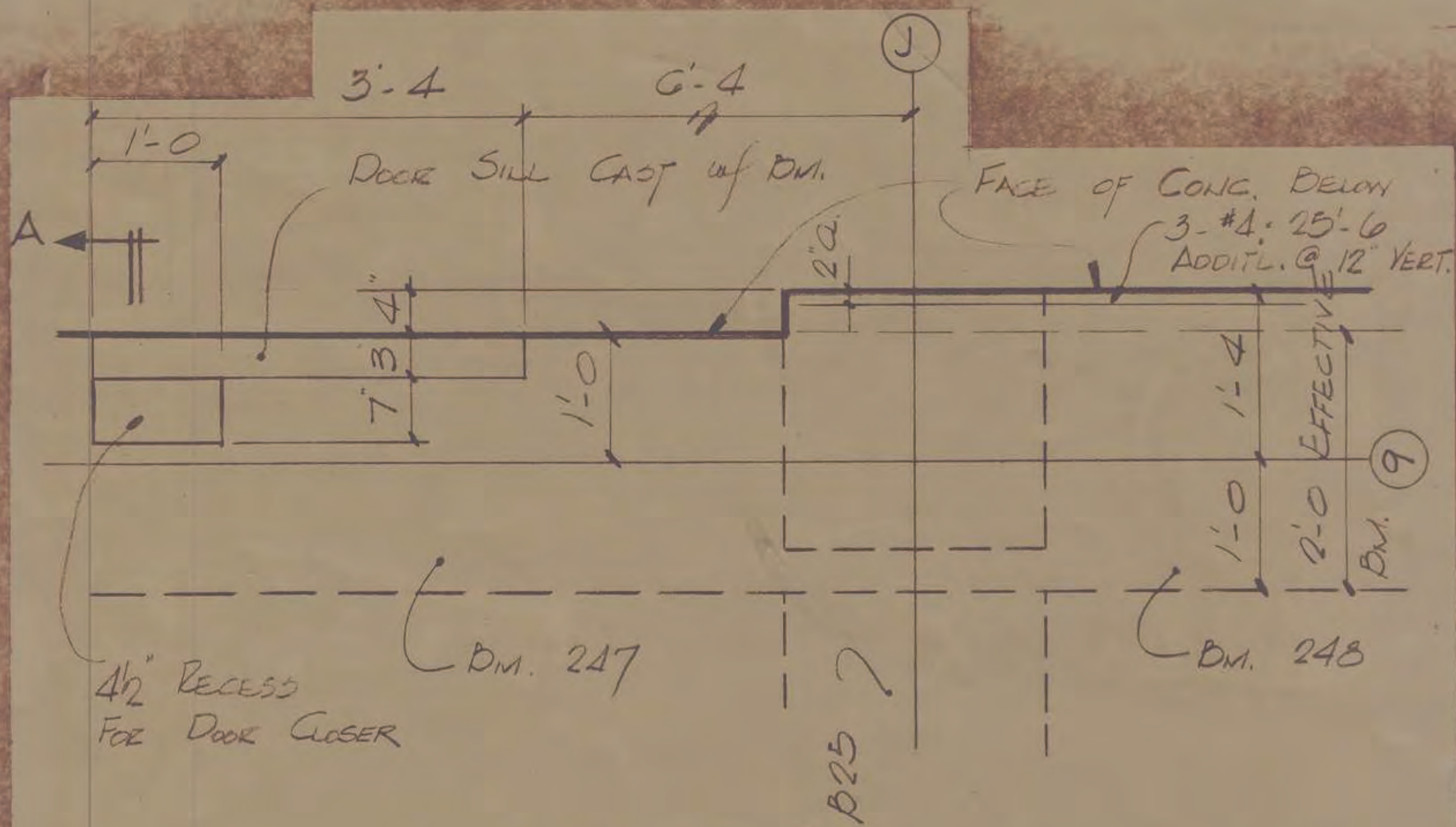
NOTE: SEE DETAIL A FOR CONTINUATION OF REINFC.

NOTE: SEE DETAIL A FOR CONTINUATION OF REINFC.

NOTE: SEE DETAIL A FOR CONTINUATION OF REINFC.

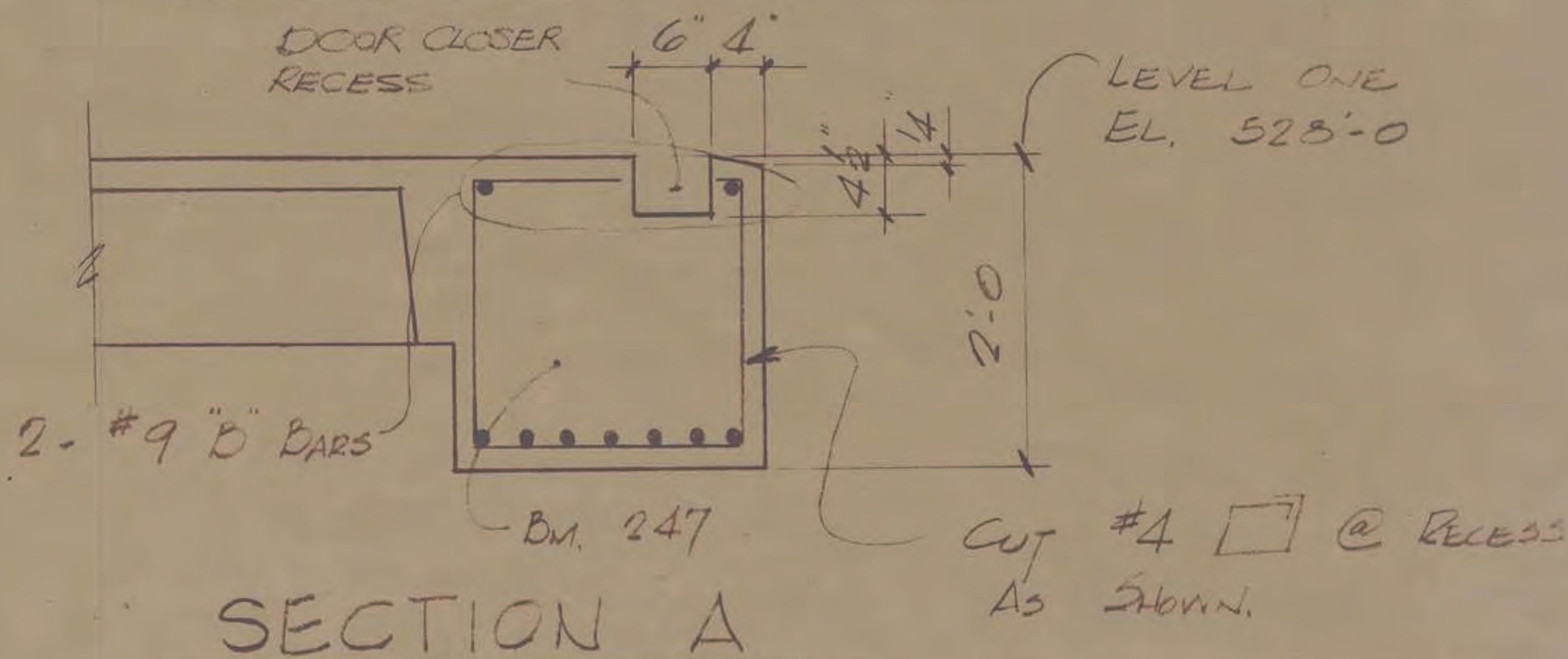






PLAN @ COL. J9 - 1<sup>ST</sup> FLOOR

SHOWING DOOR SILL & BEAM DETAILS



SECTION A

THE PURPOSE OF THIS DRAWING IS TO REVISE THE DETAIL OF BM 247 @ DOOR 124 ON LEVEL ONE.

D-7-73

<b>ST. LOUIS COUNTY JUVENILE CENTER FACILITY</b>		
CLAYTON MISSOURI		
DEPARTMENT OF PUBLIC WORKS		
DAVID E. MURRAY DIRECTOR		
PEARCE & PEARCE, INC.	ARCHITECTS & ENGINEERS	DRAWING NO. <b>S-14</b>
CASSIS ASSOCIATES, INC.	CONSULTING ENGINEER	
ROBERT F. BRUNS	ELECTRICAL ENGINEER	
CRAWFORD & WITTE, INC.	MECHANICAL ENGINEER	
BM 247 REVISION		REVISOR
		PROJ. NO. 69-01.2
		DATE 3-15-71
		DRAWN BY CAGS
		CHECKED BY PFP JRS